



Connect

Herbert Hooverplein 14 , 3000 Leuven

**Phone number:** 016 22 92 28

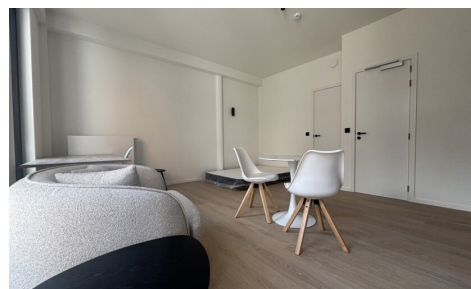
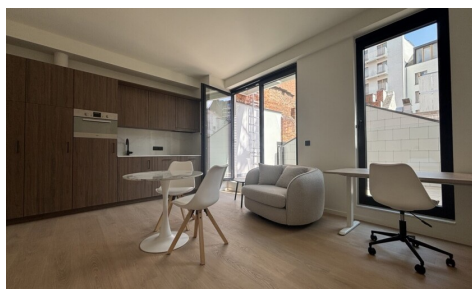
**E-mail:** office@connect-immo.be

## FOR RENT - STUDIO

Diestsestraat 66 B0101, 3000 Leuven

€ 1.075

Ref. 6806261



Number of bedrooms: 1  
Number of bathrooms: 1

Surf. Living: 27m<sup>2</sup>  
Surf. Plot: 176m<sup>2</sup>  
Neighbourhood: central

## DESCRIPTION

### **\*\*Living in Residence ROUTE 66\*\***

Living in Residence ROUTE 66 is choosing for quality and space on a strategic location. We offer you 5 high-quality furnished units equipped with everything you need and installed by professionals. For example, the units are customised and the kitchen is equipped with quality appliances (combination oven, dishwasher, large fridge-freezer, induction hob...). Furthermore, the entire building has been renovated to the current standard, the floors are acoustically insulated and this property benefits from the latest ventilation system.

Consumption is perfectly calculable as intermediate meters have been provided for each unit and are estimated at a provision of EUR 125-175,-/month per entity based on the number of people that will be staying in the unit.

Building security was also considered: the building is equipped with Salto locks for keyless entry and the internet is managed by Netvise.

This studio is on the backside of the building, with a big terrace. The unit is suitable for one person.

**Interested in an on-site viewing? Or would you like to receive a video of a specific unit? You can!**

**Contact: [verhuur@connect-immo.be](mailto:verhuur@connect-immo.be)**

---

## FINANCIAL

Price: € 1.075,00 per month

Available date: 01 September 2025

Rental guarantee: 2 months

## BUILDING

Habitable surface: 27,00 m²

Fronts: 2

Renovation: 2025

State: Very good state

Number of floors: 3

## COMFORT

Furnished: Yes

Elevator: No

## ENERGY

EPC code: EPB Startverklaring

Double glazing: Yes

Electricity certificate: Yes, conform

Heating type: Gas

Heating: Collective

## LOCATION

Environment: Central, city Center

School nearby: Yes

Shops nearby: Yes

Public transport nearby: Yes

## TERRAIN

Ground area: 176,00 m²

Garden: No

## LAYOUT

Kitchen: Yes, fully fitted

Bathroom type: All comfort

Toilets: 5

## TECHNICS

Electricity: Yes

Cable TV: Yes

Gas: Yes

Water: Yes

## PARKING

Parkings outside: No

Parkings inside: No