



Connect

Herbert Hooverplein 14 , 3000 Leuven

**Phone number:** 016 22 92 28

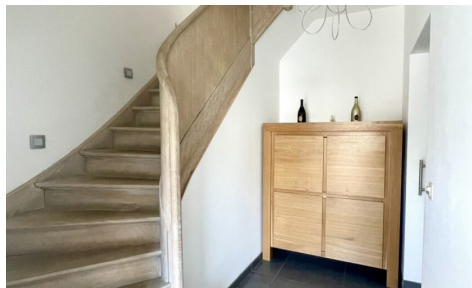
**E-mail:** office@connect-immo.be

## FOR RENT - HOUSE

Middelweg 97, 3001 Heverlee

€ 2.100

Ref. 6780005



Number of bedrooms: 4  
Number of bathrooms: 2  
Garages: 1

Surf. Living: 187m<sup>2</sup>

PEB/EPB: 109kwh/m<sup>2</sup>/j

## DESCRIPTION

---

### FINANCIAL

Price: € 2.100,00 per month

Available date: 01 June 2025

Rental guarantee: 3 months

### BUILDING

Habitable surface: 187,00 m²

Fronts: 3

Construction year: 1955

State: Very good state

### COMFORT

Furnished: Yes

Elevator: No

### ENERGY

EPC score: 109

EPC code: 20250430-0003589991-RES-1

EPC class: B

Double glazing: Yes

Windows: Wood

Heating type: Gas (centr. heat.)

Heating: Individual

### LOCATION

School nearby: Yes

Shops nearby: Yes

Public transport nearby: Yes

### TERRAIN

Garden: Yes

### LAYOUT

Kitchen: Yes, hyper equipped

Bathroom type: All comfort

Toilets: 2

Laundry: Yes

Attic: Yes

### TECHNICS

Electricity: Yes

Phone cables: Yes

Cable TV: Yes

Sewage: Yes

Gas: Yes

Water: Yes

### PARKING

Garage: 1

Parkings outside: 1

Parkings inside: 1